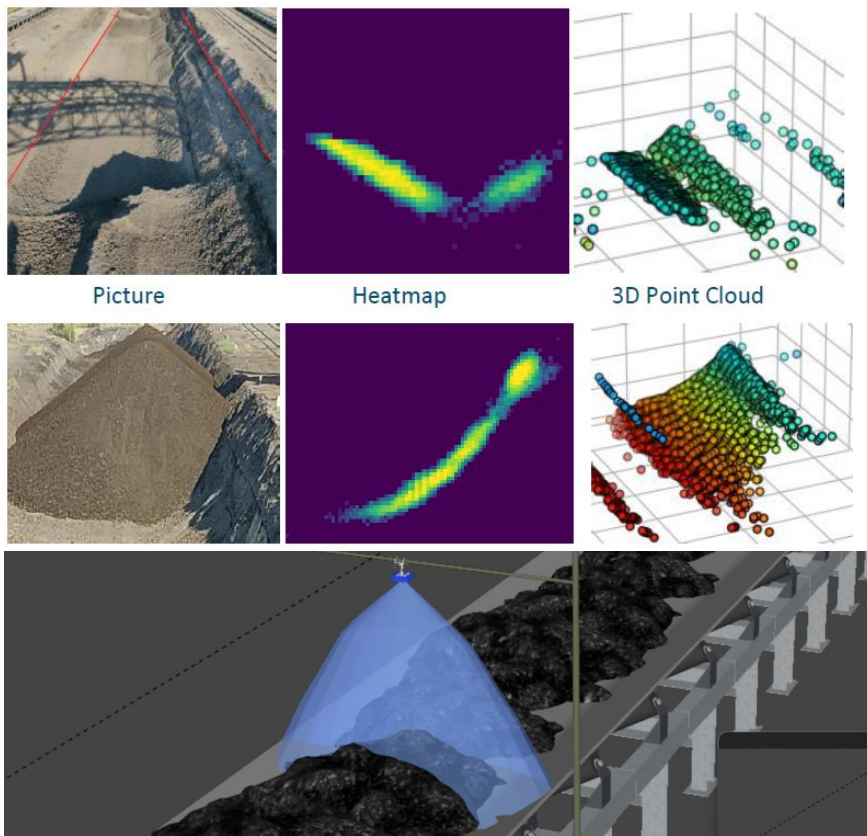


# 3D SURFACE IMAGING AND BULK MATERIAL DETECTION SYSTEM

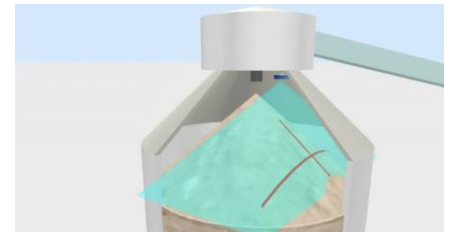
## Cement, coal and coke silos



## System description

System:

- Performs data packets with information about the level or surface of the tested material
- Displays data enabling the creation of a visualization on the user's existing PLC system.
- Prepares warning and overflow signals to the relay outputs



Features:

- Range:  $\leq 40\text{m}$
- Opening angle:  $\pm 45^\circ$
- The software allows you to limit the detection zones horizontally and vertically
- Filtering objects based on their speed (elimination of reflections - e.g. of wagon walls)
- Data frame outputs or relay control
- Industrial design for harsh environments

## Railway wagon filling

